

Frontside

RIM CONTOUR ACC. TO ISO 4209-2  
209,5 ±3,2 (8,25")

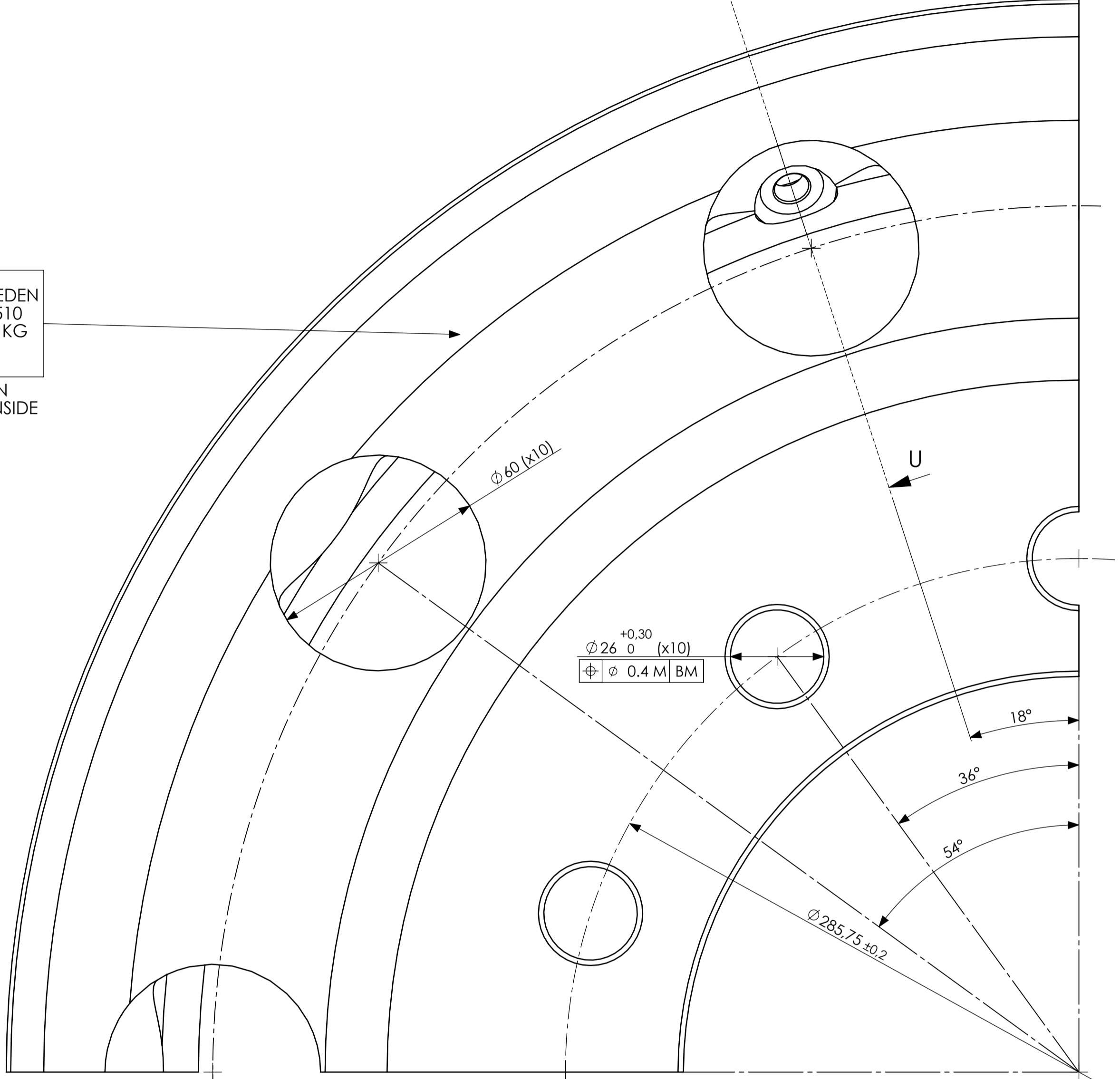
104,75

0.4 A B

Inside

SECTION W-W

TUNA WHEEL SWEDEN  
8.25x22.5 82522510  
MAX LOAD 3550 KG  
D.O.T. S. YEAR  
SERIAL NO:  
STICKER GLUED ON  
FRONTSIDE AND INSIDE



Ø 220.1 +0.2/-0.0

24,5<sup>0</sup><sub>-0.5</sub>

165<sup>+3</sup><sub>0</sub>

290,75

Ø 487,5 min.

Ø 571,5 +0.4/-0.4 (22.5")

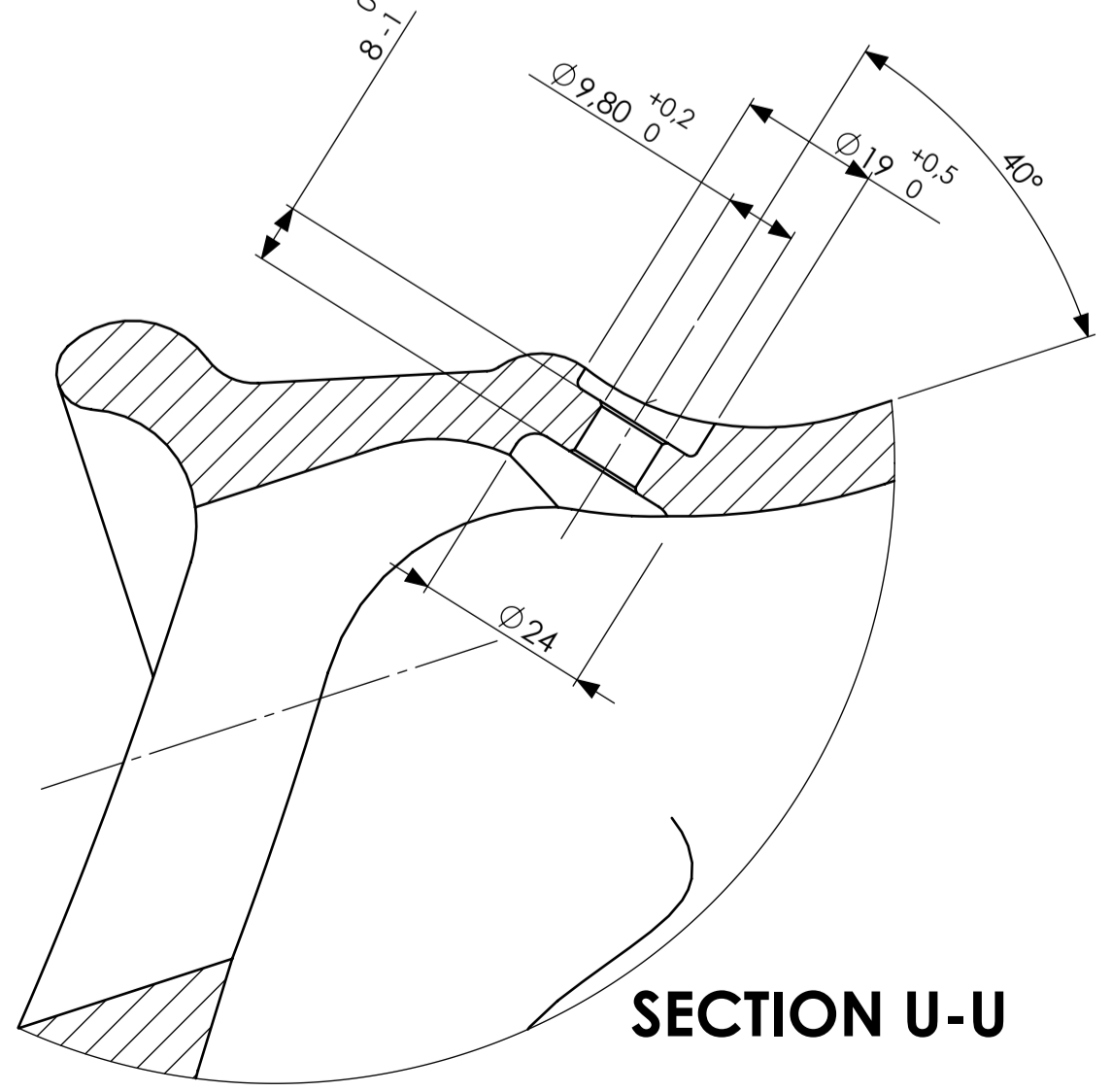
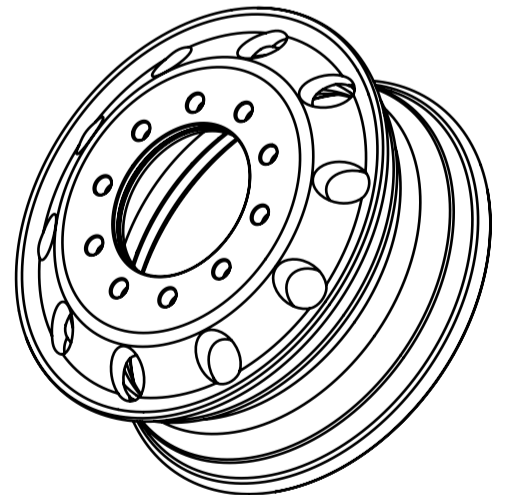
Ø 596,9 +1.4/-1.4

(MIN. Ø 370 PLANE)

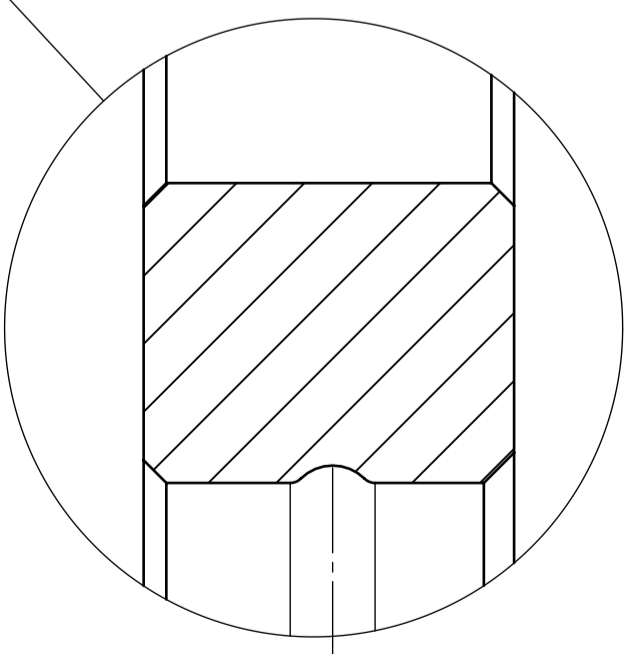
0.3 III

0.1 A I

Partnumber	Surface	C Ø
825225105	Diamond no clear coat	26
825225106F	Polished front no clear coat	26
825225106I	Polished inside no clear coat	26
825225106D	Polished inside no clear coat	26



SECTION U-U



DETAIL X  
SCALE 2 : 1

REMOVE BURRS  
BRAKE SHARP EDGES  
HARDNESS 95-110 HB  
ISO 2768-C

Title / Name, Designation, Material, Dimension etc. SS4245-07 Weight: 25kg		KBA No / Reference	
Designed by J.P.	Checked by	Date 050615	
Owner TUNAVERKEN SWEDEN AB		Title/Name Cast Wheel 8.25x22.5 B.C.D 285.75	
Drawing number 82522510-C		Issue 03	Alt A1

PROPRIETARY AND CONFIDENTIAL  
THE INFORMATION CONTAINED IN THIS DRAWING IS THE SOLE PROPERTY OF THE OWNER. ANY REPRODUCTION IN PART OR AS A WHOLE WITHOUT THE WRITTEN PERMISSION FROM THE OWNER IS PROHIBITED.

