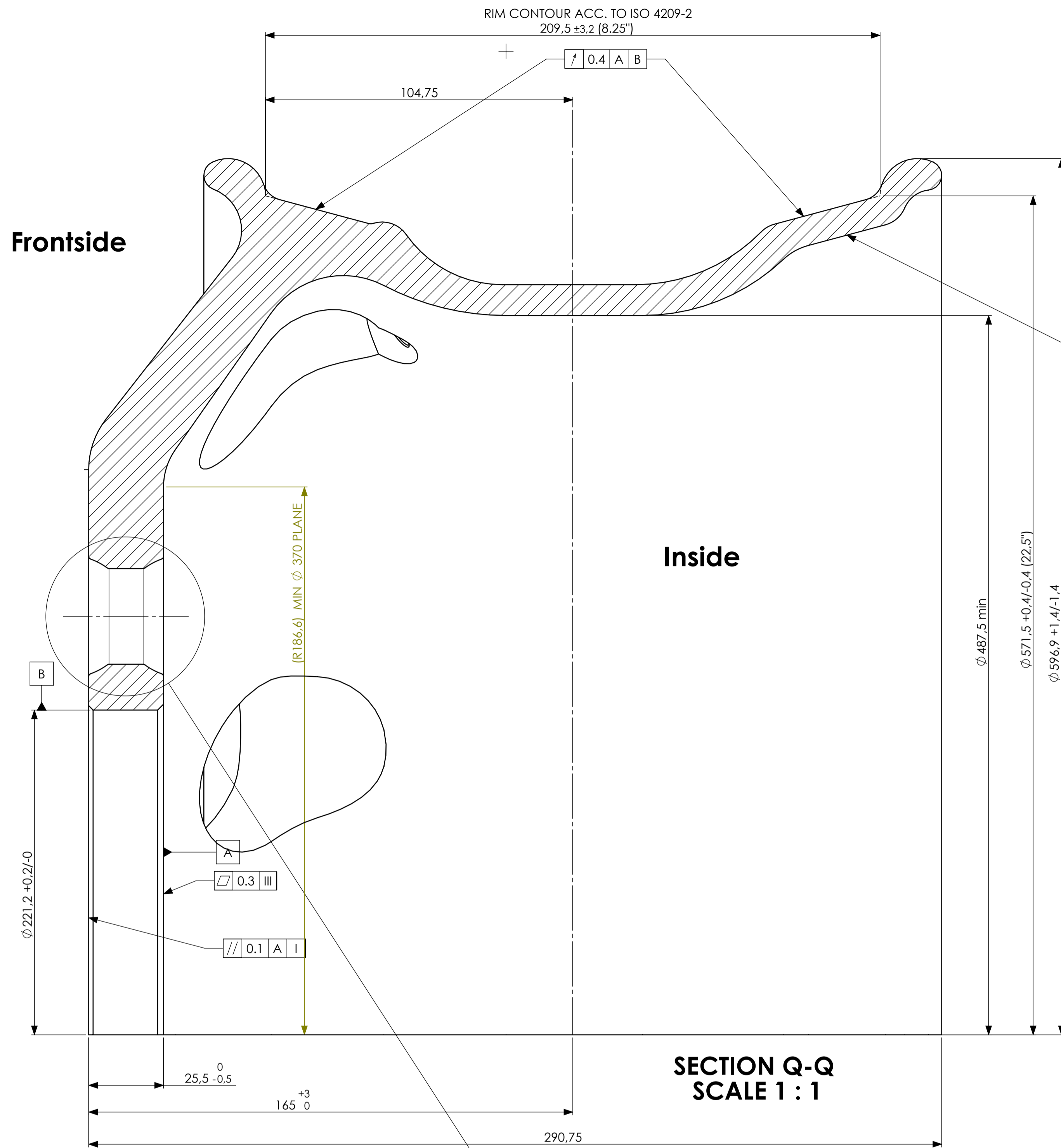
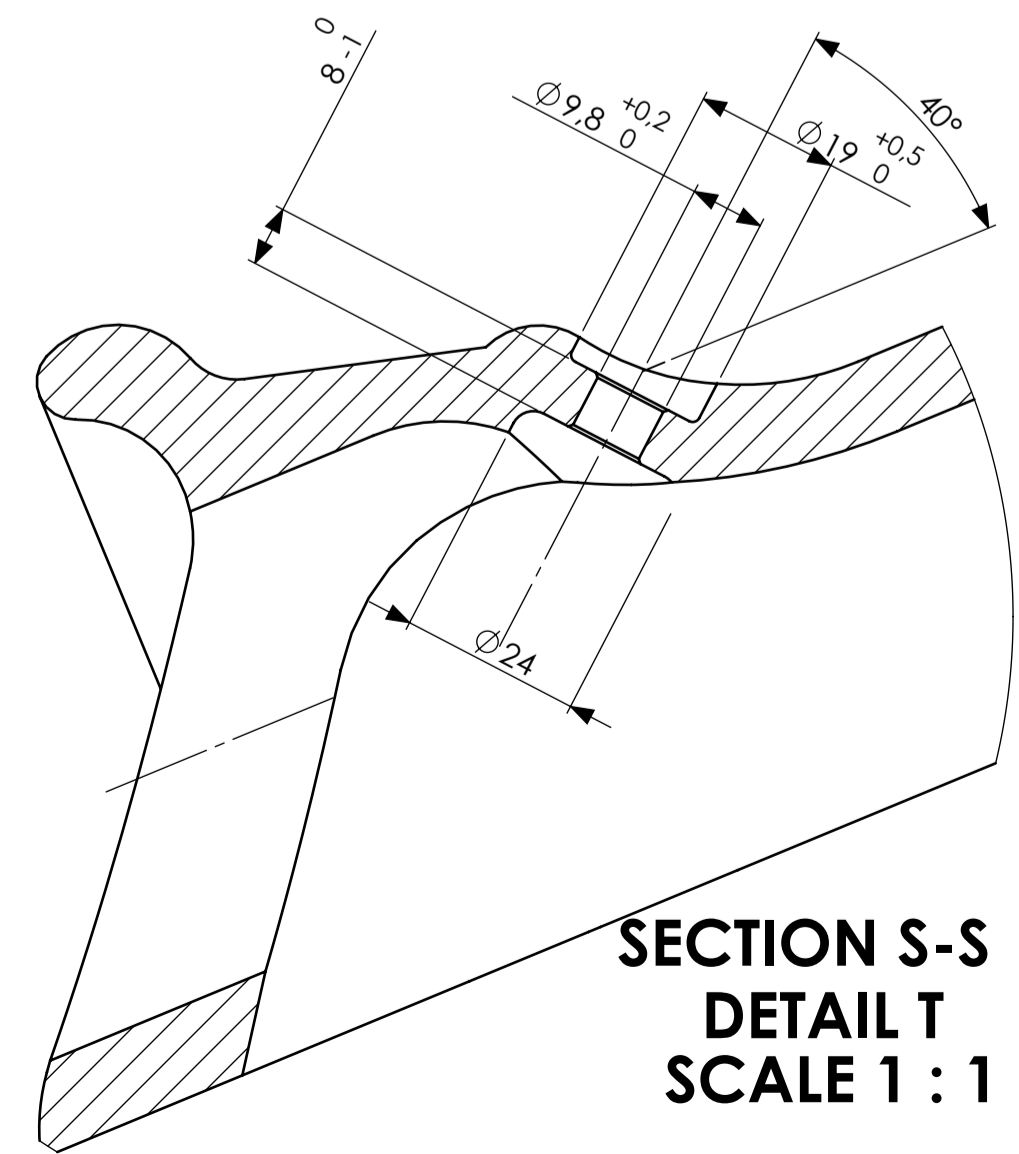


Frontside

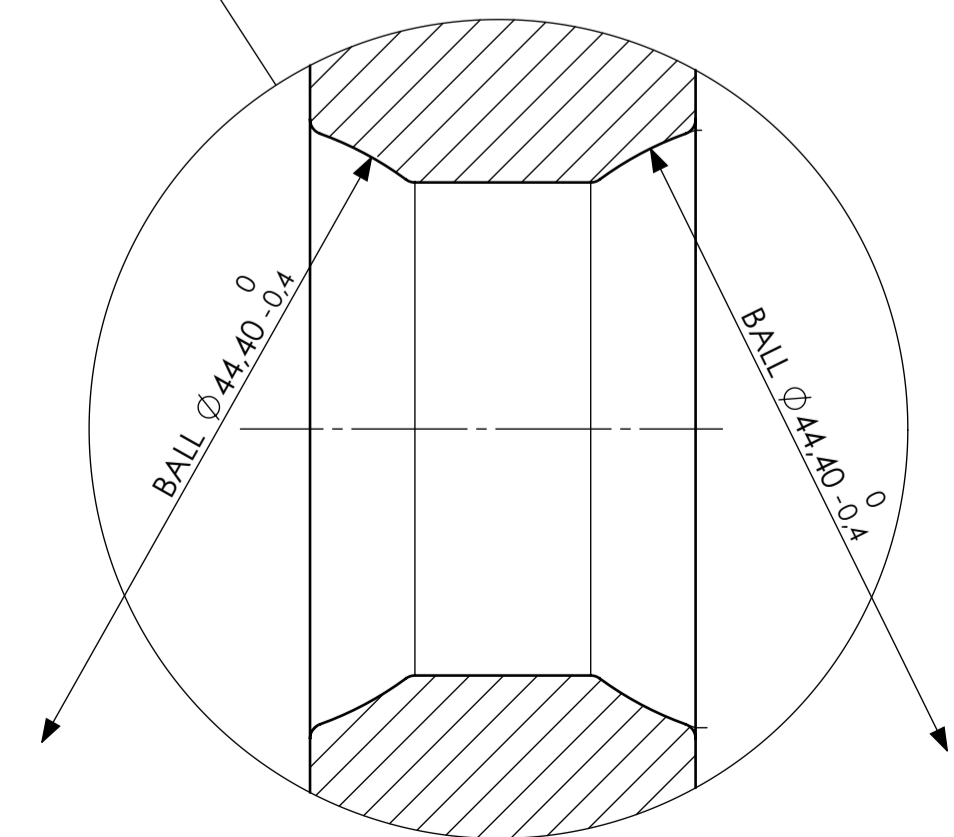


Inside

SECTION Q-Q
SCALE 1 : 1



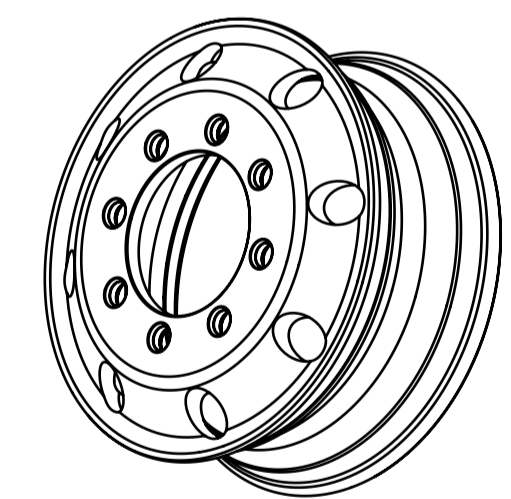
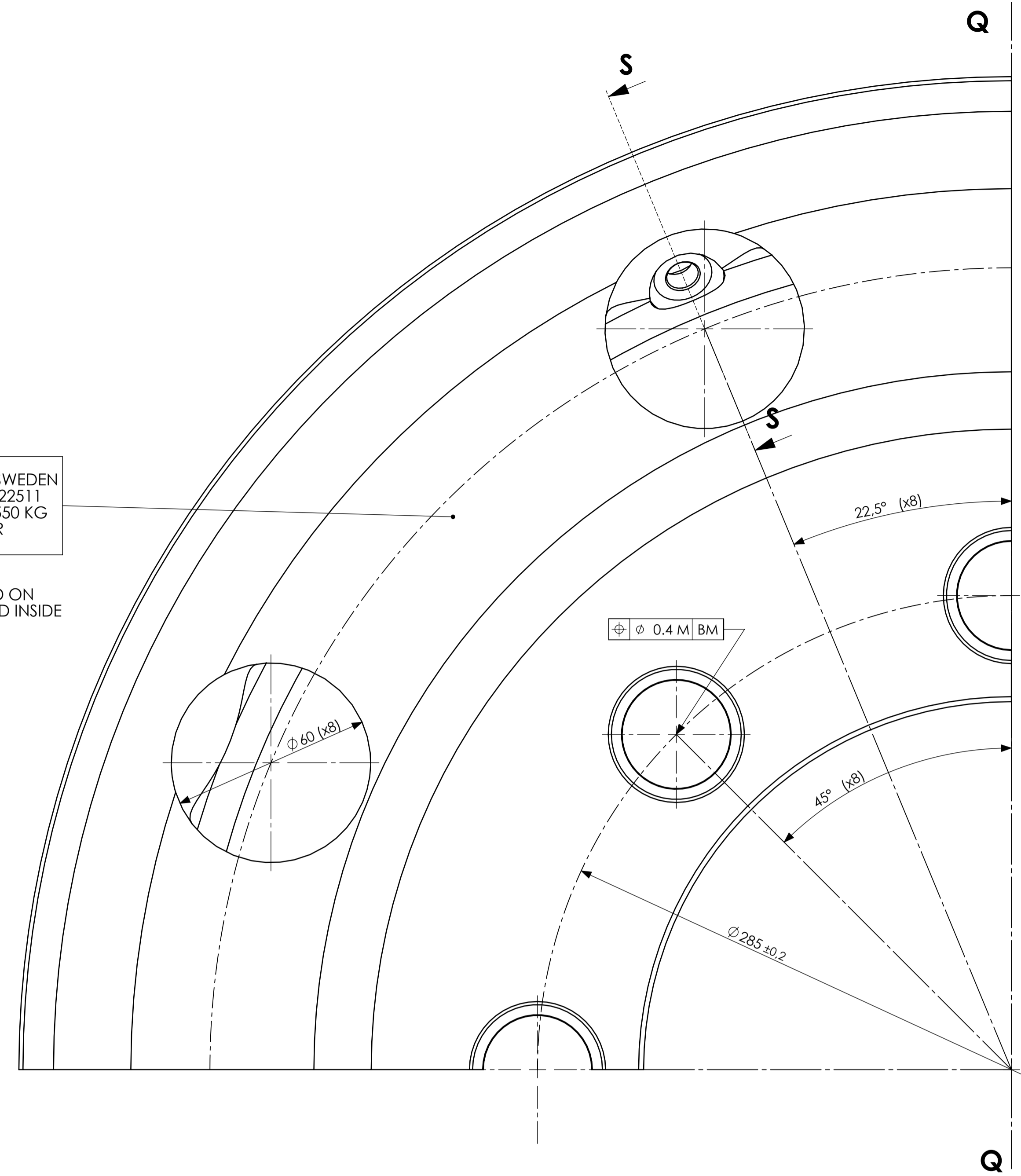
SECTION S-S
DETAIL T
SCALE 1 : 1



DETAIL R
SCALE 2 : 1

TUNA WHEEL SWEDEN
8.25x22.5 82522511
MAX LOAD 3550 KG
D.O.T. S. YEAR
SERIAL NO.

STICKER GLUED ON
FRONTSIDE AND INSIDE



Partnumber	Surface
825225115	Diamond no clear coat
825225116F	Polished front no clear coat
825225116I	Polished inside no clear coat
825225116D	Polished front and inside no clear coat

REMOVE BURRS
BRAKE SHARP EDGES
HARDNESS 95-110 HB
ISO 2768-C

PROPRIETARY AND CONFIDENTIAL
THE INFORMATION CONTAINED IN THIS
DRAWING IS THE SOLE PROPERTY OF
THE OWNER. ANY REPRODUCTION IN
PART OR AS A WHOLE WITHOUT THE
WRITTEN PERMISSION FROM
THE OWNER IS PROHIBITED.

Material, Weight: SS4245-07 Weight: 27kg		KSA No / Reference	
Designed by J.P.	Checked by	Date 050615	
Owner TUNAVERKEN SWEDEN AB		Title/Name Cast Wheel 8.25x22.5 B.C.D 285	
Drawing number 82522511-C		Issue 03	A1